

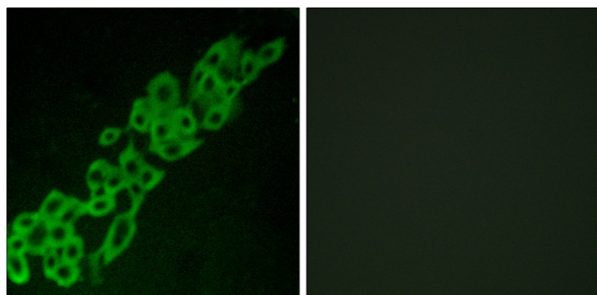


GPR32 Polyclonal Antibody

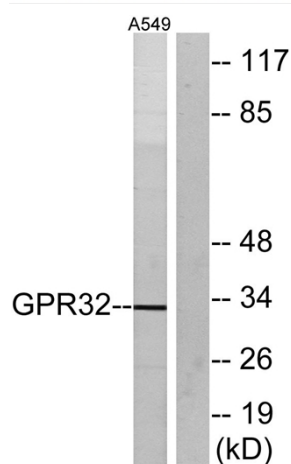
Catalog No	YP-Ab-13331
Isotype	IgG
Reactivity	Human;Rat;Mouse;
Applications	WB;IF;ELISA
Gene Name	GPR32
Protein Name	Probable G-protein coupled receptor 32
Immunogen	The antiserum was produced against synthesized peptide derived from human GPR32. AA range:151-200
Specificity	GPR32 Polyclonal Antibody detects endogenous levels of GPR32 protein.
Formulation	Liquid in PBS containing 50% glycerol, 0.5% BSA and 0.02% sodium azide.
Source	Polyclonal, Rabbit,IgG
Purification	The antibody was affinity-purified from rabbit antiserum by affinity-chromatography using epitope-specific immunogen.
Dilution	Western Blot: 1/500 - 1/2000. Immunofluorescence: 1/200 - 1/1000. ELISA: 1/20000. Not yet tested in other applications.
Concentration	1 mg/ml
Purity	≥90%
Storage Stability	-20°C/1 year
Synonyms	GPR32; Probable G-protein coupled receptor 32
Observed Band	33kD
Cell Pathway	Cell membrane; Multi-pass membrane protein.
Tissue Specificity	
Function	function:Orphan receptor.,similarity:Belongs to the G-protein coupled receptor 1 family.,
Background	This gene is intronless and encodes a member of the G-protein coupled receptor 1 family. The encoded protein binds to resolvin D1 and lipoxin A4 and has been linked to pulmonary inflammation. A related pseudogene has been identified on chromosome 19. [provided by RefSeq, Nov 2012],
matters needing attention	Avoid repeated freezing and thawing!
Usage suggestions	This product can be used in immunological reaction related experiments. For more information, please consult technical personnel.



Products Images



Immunofluorescence analysis of A549 cells, using GPR32 Antibody. The picture on the right is blocked with the synthesized peptide.



Western blot analysis of lysates from A549 cells, using GPR32 Antibody. The lane on the right is blocked with the synthesized peptide.